

CATCH & RELEASE

VOL. 7 NO. 9

SEPTEMBER 2020—BASS LAKE PROPERTY OWNERS ASSOCIATION

President Rick Anderson's Thoughts

On September 1, Bass Lake's level had dropped to 10 inches below the "Top of the Dam" mark. Why doesn't our pump (installed in 1964) stop the drop? Because, at full capacity, it will only pump a little over a million gallons a day. In a month, that's only enough water to raise the lake about an inch plus. So what if there was no pump? It would be like 1963 again. Without our pump I'd put September 1, 2020 lake level at minus 14 inches instead of minus 10 inches and, of course, dropping. For many, that would be, "get your boat off the Shore Station, get it on an auger or just get it out." The real good thing about our pump is that it can run most of the year adding level in the off season; running a full year it can raise lake level 16 inches from what might have been. Between the pump and rain, our lake should again be full or near full by spring 2021. As of September 13th, we need to make up about 13 inches. Our waters remain pretty clear with much Eurasian Milfoil in areas that went untreated. Interestingly, the lake is experiencing noticeable surface bubbling where it was treated. ProcellaCOR may be enhancing the decaying process of sunken weed remains.

Our August PO meeting: The parking lot is resurfaced and waiting for striping. Power washing and painting our building will need a decision - plans are to do the upgrading before winter. The parking lot garden needs updating - another decision. Some trees need cutting under our flagpole. Our "Welcome to Bass Lake" signs are faded and we could use another at the new triangle. Two additional red buoys for Gull Point were approved for next year. As often happens when the lake level drops, the Conservancy District reports that rainfall has been low. Then, second pump, dredging and raising the dam discussion begin and continue. It happened as predicted. A "State of the Weeds" discussion also ensued. The Christmas Bazaar is still planned for December. Ron gave the Neighborhood Watch report resulting in normal discussions.

Around the lake: Watch out for our numerous deer population. I hit one; Mark, at Mark's Body Shop did a



Shadberry Organics—There is an organic farm stand on the southeast side of the lake, at SR 10 and Meyer Road. This well maintained stand has a nice selection of organic produce.

great job fixing my truck: Until less vegetation allows better visibility, I am engaging cruise control at 30 mph as deemed appropriate. Two new restaurants are on the lake: The Harbour House & The Bass Lake Pizza Joint - give them a try. Another lake weed resurvey identified much Eurasian Milfoil awaiting 2021 treatment. Hopefully, the Conservancy District will again receive approval for ProcellaCOR treatment and again achieve bubbling results. The "V" jackpot is pushing \$115K; good luck if you're playing. Start thinking 2021 with Bass Lake again Bass Lake with businesses fully opened, no COVID, few invasive weeds and plenty of water. Stay safe and healthy, Rick

Buoy Questions? It's time to take your buoys out! If you have questions contact our Buoymaster Gary Laiter at (773) 750-4049.

Property Owners Association—Saturday, October 3 at 9:00 a.m., BLPOA building

Bass Lake Neighborhood Watch: Monday, October 5 at 6:30 p.m. BLPOA Building

Starke County Park Board (our Beach): Tuesday, October 13 at 6:00 p.m. at the Starke County Annex

Bass Lake Conservancy District: (our sewers, pump and lake weeds) Monday, October 12 at 6:00 p.m., BLPOA Building

Prairie Trails Club

For your convenience, the **PTC Work Day is Saturday, Sept 19th at 9:00 a.m. CDT.** Parking is best at CR 125 (near the Vin Fiz sign), but there are also a few spaces at CR 200 and the trail. Or, of course, you can ride your bikes!

The next **PTC Meeting is Sept 24th at 5:30 pm CDT** (30 minutes earlier than usual due to the darkening skies). It will be outdoors at the North Judson Town Park at Weninger & George Streets, Shelter #2.

Note: The trail extension project continues to move forward, which will add 2 miles to the Erie Trail, south-east of US 35! Construction will occur in 2021.

Perry Rogers and His Horse Drawn Mail Buggy

This photo dated 1911 shows rural mail carrier Perry Rogers with his horse drawn mail buggy. Mr. Rogers delivered mail for Rural Route 1 out of Knox for many years. His 35 mile route included parts of Center and California Townships, as well as the west side of Bass Lake. We can only imagine what it was like navigating the county roads during the winter before snow plows. Rural mail delivery was the reason many county roads were eventually improved.



The first rural mail carriers were only paid \$300 a year. Rural mail delivery was fairly new in 1911. It had only become official in 1904. Prior to then, folks living in rural Starke County had to pick up their mail at the nearest general store in places like Aldine, Brems, Ober and Toto.

A large framed version of this same photo was donated to the Grant W. Green Post Office in Knox by the Starke County Historical Society a number of years ago and was on display in their lobby.

Submitted by: Ron Vendl, Starke County Historical Society

Bass Lake Property Owners Association

President ~ Rick Anderson
 Vice President ~ Mary Topelian
 Treasurer ~A. J. Gappa
 Secretary ~ Kathy Laiter

Board Members

- Terry Chmiel
- Mary Jesso
- Rich Linkus
- Rik Ritzler
- Gayle Smith
- Ron Vendl

Board member contact information is on our website:

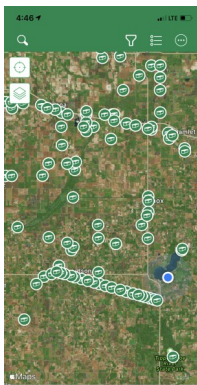
www.inbasslake.com



The BLPOA building continues to be renovated. The parking lot was recently repaved!

Geocaching at Bass Lake—

Who is a geocache enthusiast? Did you know that Starke County has 70 geocache sites, including some here at Bass Lake? This is an excellent, free, outdoor activity. It is like a treasure hunt! To get started, download



The green dots are all the nearby geocaches!

the [geocaching app](#) to your phone and make a free account. After that, find a geocache near you and select it. The app tells you where the geocache is but you get to decide how to get there. They are never buried but they don't have to be on the ground. They could be in a tree or hidden. They each have a name and a description. To learn more go to www.geocaching.com.

Lake Water Level Unbelievably Low

"This too shall pass". Regarding the receding lake level, remember Mother Nature is in control. Bass Lakes' water source: the springs, snow, rain and the lake pump. The pump adds 1 1/2 million gallons of water each day. Evidently Mother Nature can evaporate more water than the pump contributes.

In the summer of 1963 the water level was so low it was possible to walk across the South bay of the lake. In 2012 there was 200 feet of beach in front of our East shore home so you can imagine the water level on the South end. We've had 8 years since the last drought. There were many Augusts' in between, after a dry Summer, that this occurs.

With snow this Winter, and rains in the Spring we will be back to normal next Summer. Again, Mother Nature rules but, she has not failed us yet.

So, remember the warm days enjoyed this year for swimming, boating and fishing. The warm winds for sailing. Look forward to ice skating, fishing and snowmobiling this Winter. Look forward to all the summer activities in 2021! *Contributed by Russ Blais, Bass Lake Resident and BLCD Board Member*

Christmas Marketplace—Sell your products at our Christmas Marketplace which features local crafters, artists and third party vendors. The event is on December 5 from 9:00 a.m. —3:00 p.m. at the BLPOA building. Contact Mary Topelian, mjtopelian@att.net.

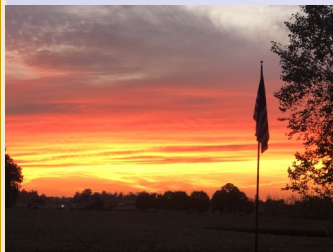
Bass Lake Conservancy District (BLCD) - Rainfall for August was 1.99 inches. Total for the year – 22.50 inches. It is well below our average rainfall of 38.79 inches. The pump is scheduled to shut down for the season at the end of October. If you know any rainfall chants... Our next scheduled meeting is Monday, October 12, 2020 at 6:00 p.m. CST – BLPOA building. **Face masks are required.** If you should have any questions/concerns – or want to register your email address with us (for our new email service) – please call the BLCD office at 574 772-2974 or email us at info@blcd-ind.org. *Submitted by Larry Collura – Vice Chairman BLCD*

Message from the Bass Lake Marina—If you haven't been to the lake recently be sure to get here and make you can still get your boat off your lift. People need to be sure to bring extra people to get their boats into deeper water. All lifts that the marina does must be out by September 16 because the lake is dropping quickly.

Indiana Birding Trail—Looking for a new outdoor activity during this pandemic? Indiana is home to over 400 documented bird species, making it the perfect place for a birding adventure. The birding experiences won't disappoint at Bass Lake, from purple martins to our very own Bald Eagle. The Indiana Audubon Society recently created a new guide: *The Indiana Birding Trail*, featuring 64 great bird watching locations. Divided up into five regions of the state, the trail guide covers everything you need to know on each area, including eco-regions, climate influences and bird species. The nearby Kankakee Fish and Wildlife Area is included, which features the Bald Eagle, Blackbird, Golden Eagle and the Brewer's Blackbird. The complete Indiana Birding Trail Guide is on the Indiana Audubon Society website.

A Note from Ron Vendl, former President of the Starke County Historical Society

This article is the last in the series of articles I am able to share with you regarding Bass Lake history. All of the articles I have shared over the past six years were from a collection of former Starke County Historian Marvin Allen, a descendant of August White, who first settled on the west shore of Bass Lake with his family in 1878.



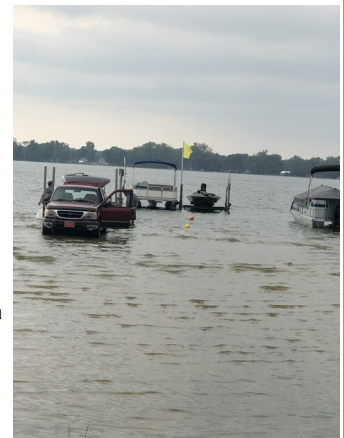
Another beautiful Bass Lake sunset!

It is my understanding that Kathy Carrier, the editor of this excellent newsletter, will rerun all of the previous articles in the future editions of **Catch & Release**.

I have had a lot of positive feedback from folks about the articles these past years and am pleased that they have been well received by the readers. Thank you for allowing me to share them with you!



The lake level is so low that many shorelines around the lake are sandy beaches rather than shoreline!



The lake water level is so low, this resident drove his truck into the lake to make the pier and lift take-out processes easier. That has to be a lake first...